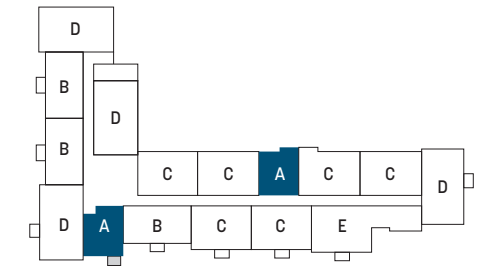
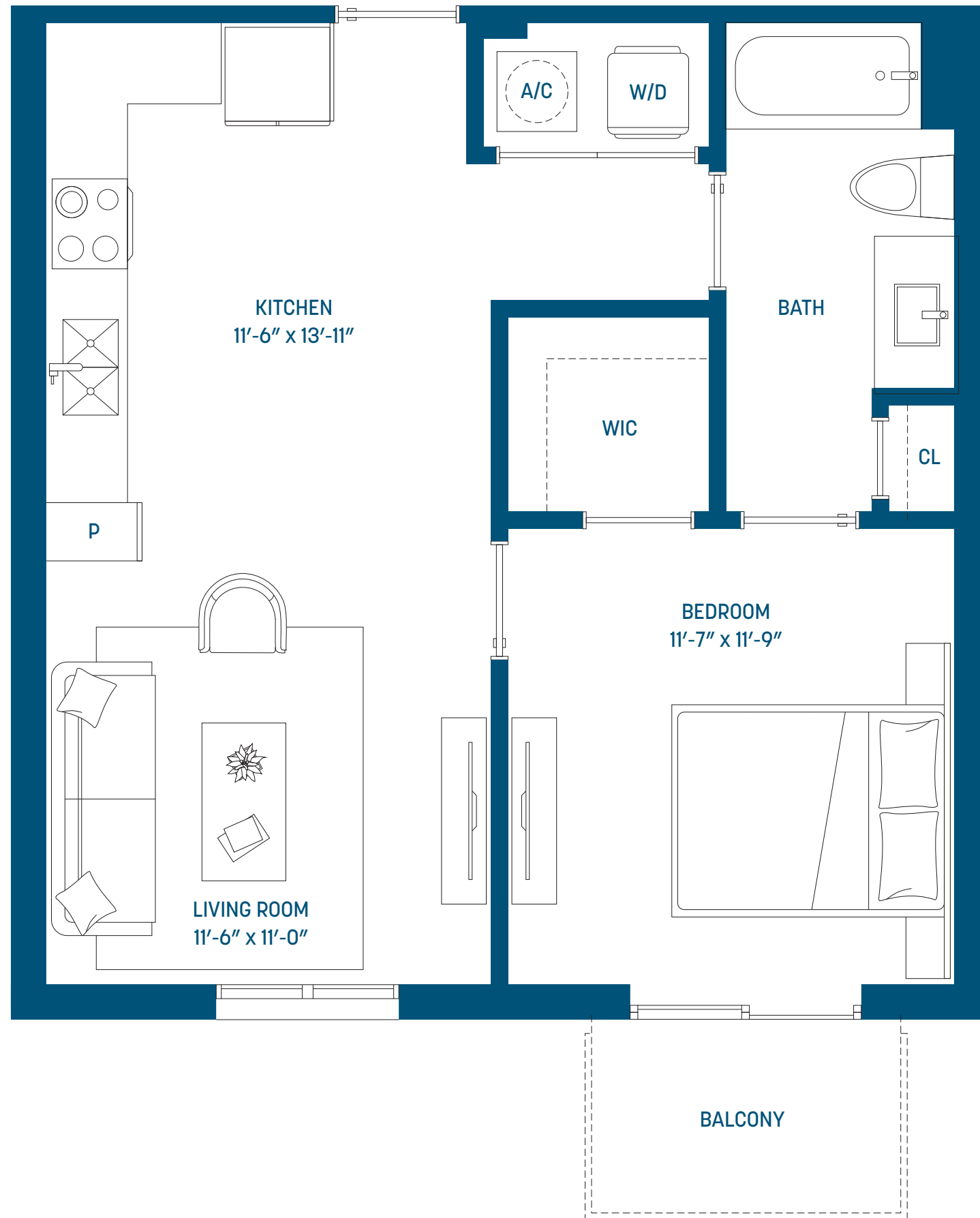
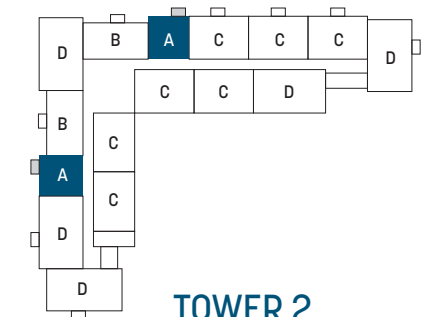


**UNIT A**

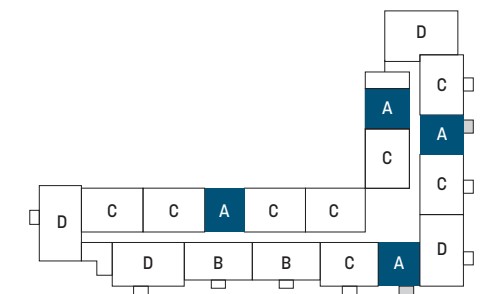
1 Bedroom  
1 Bathroom



**TOWER 1**  
**TOTAL AREA 650 Sq. Ft.**



**TOWER 2**  
**TOTAL AREA 595 Sq. Ft.**



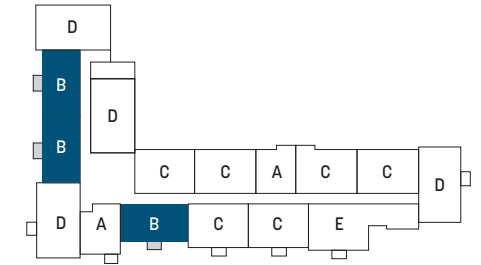
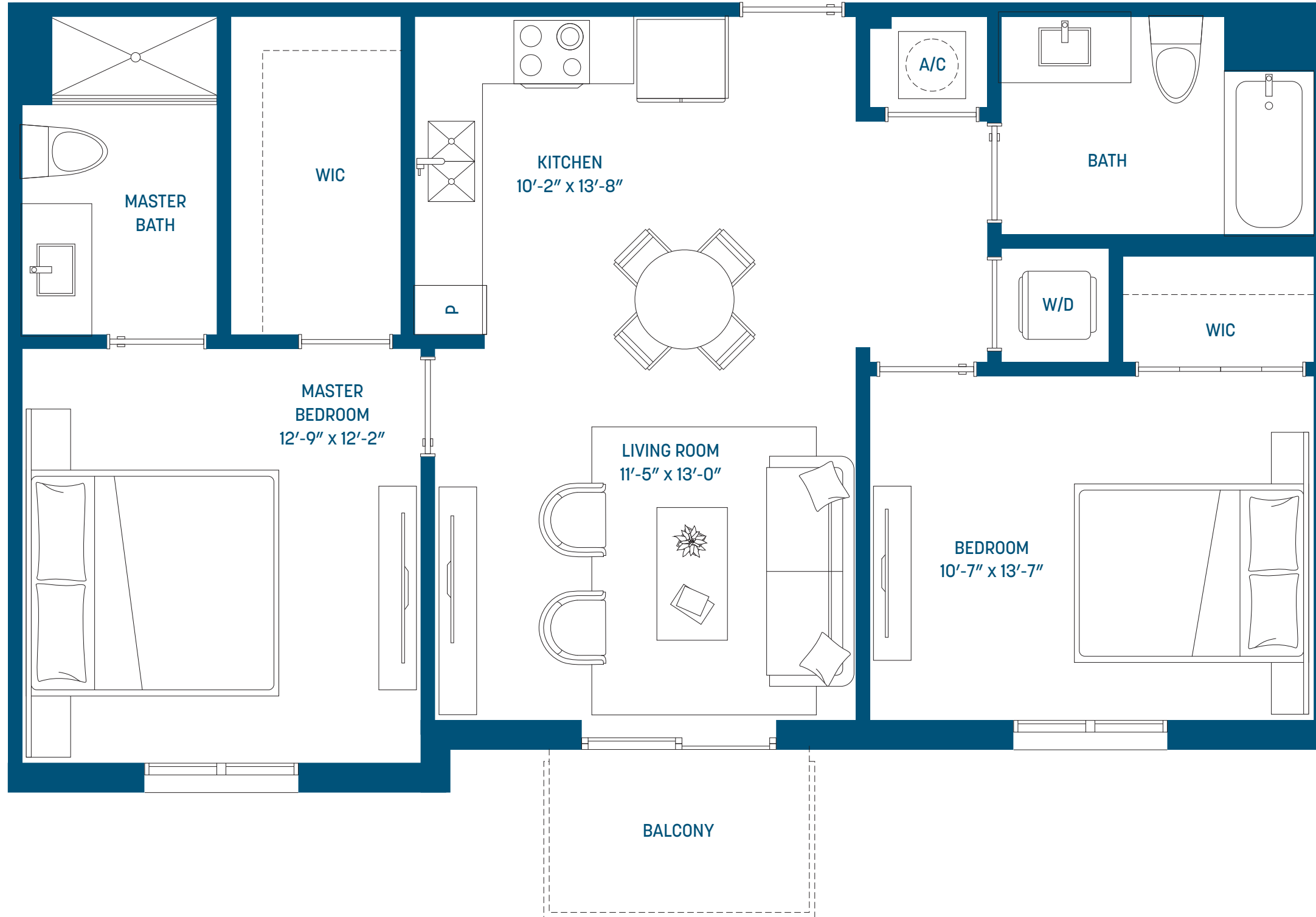
**TOWER 3**  
**TOTAL AREA 640 Sq. Ft.**

# BOULEVARD

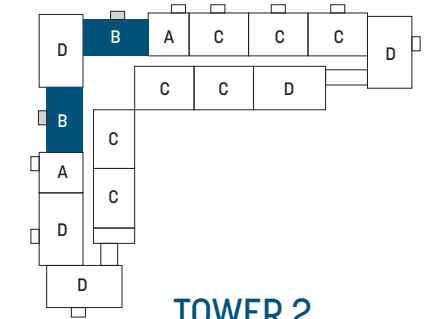


## UNIT B

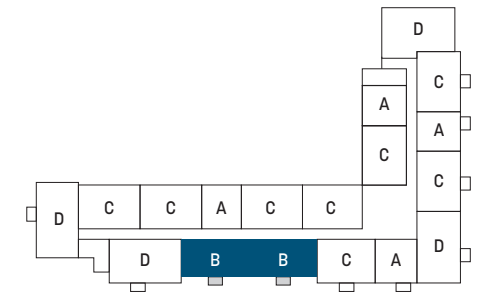
2 Bedrooms  
2 Bathrooms



**TOWER 1**  
**TOTAL AREA 925 Sq. Ft.**



**TOWER 2**  
**TOTAL AREA 850 Sq. Ft.**



**TOWER 3**  
**TOTAL AREA 910 Sq. Ft.**



The developer is WRDG T3A, T3B, T3C Developer, LLC, which has a license to use the name and trademarks of The Related Group by license. The renderings, including floor plans, are intended to illustrate unit options and layouts in general and are not a representations of unit sizes and dimensions specifically.

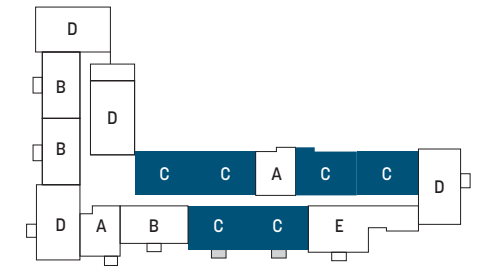
813.328.2026  
1345 W. Main Street, Tampa, FL 33607  
TPAtogether.com/Boulevard

# BOULEVARD

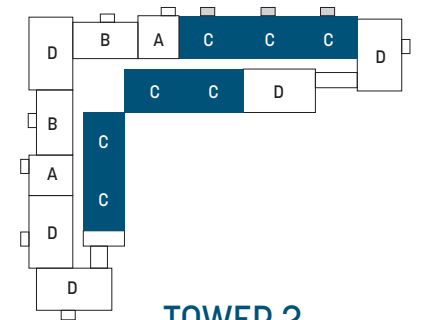


## UNIT C

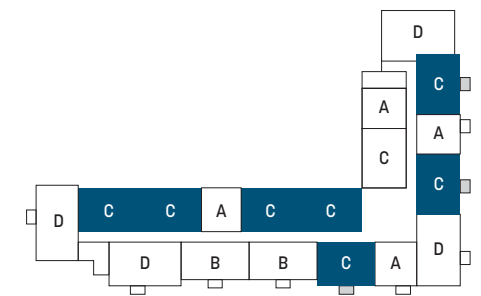
2 Bedrooms  
2 Bathrooms



**TOWER 1**  
**TOTAL AREA 950 Sq. Ft.**



**TOWER 2**  
**TOTAL AREA 910 Sq. Ft.**



**TOWER 3**  
**TOTAL AREA 960 Sq. Ft.**



The developer is WRDG T3A, T3B, T3C Developer, LLC, which has a license to use the name and trademarks of The Related Group by license. The renderings, including floor plans, are intended to illustrate unit options and layouts in general and are not a representations of unit sizes and dimensions specifically.

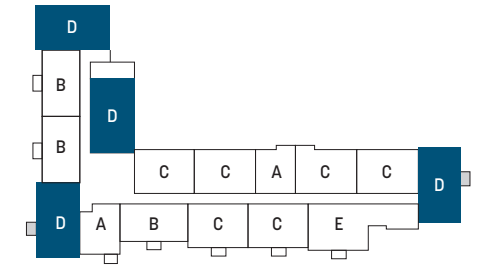
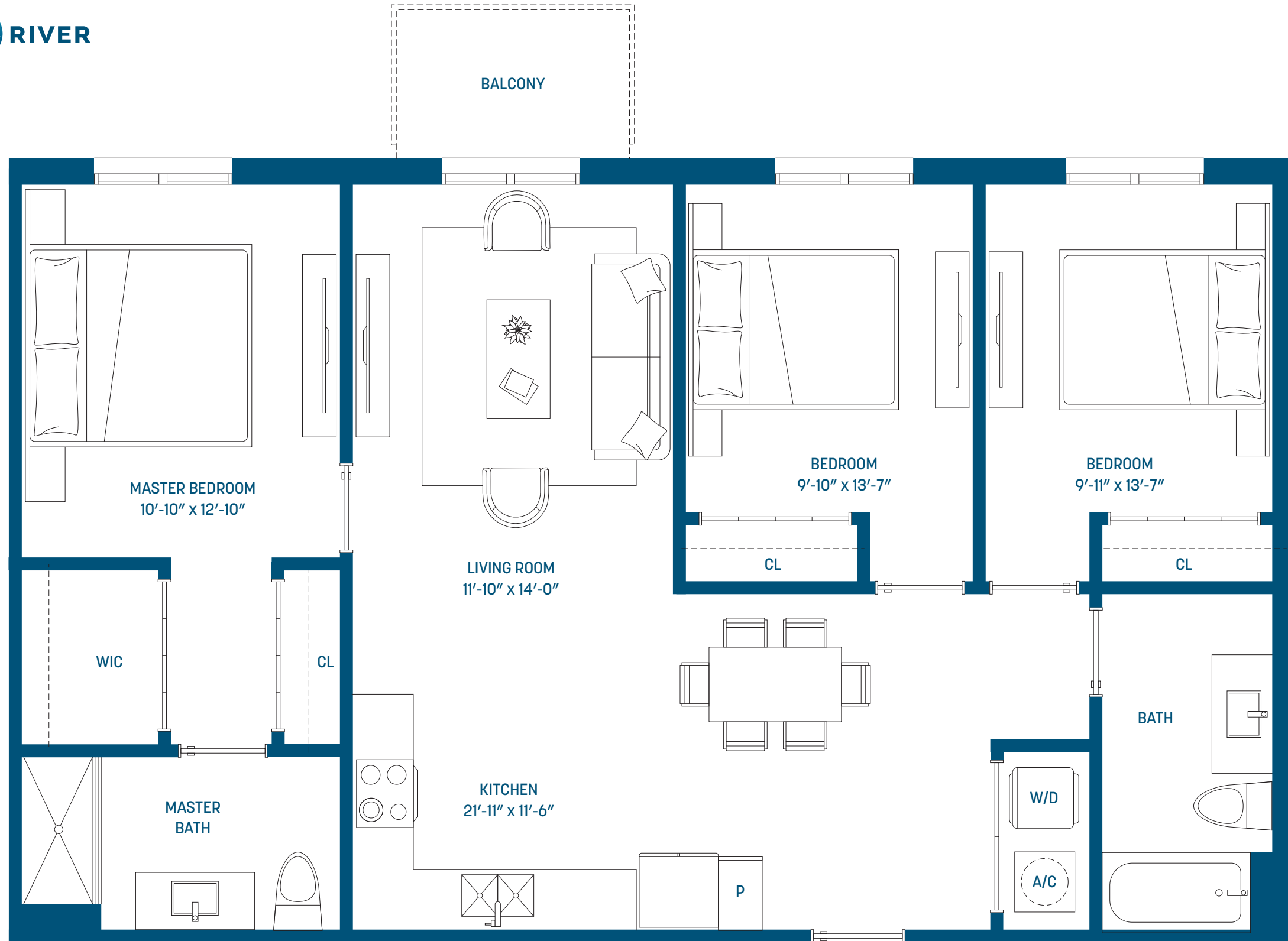
813.328.2026  
1345 W. Main Street, Tampa, FL 33607  
TPAtogether.com/Boulevard

# BOULEVARD

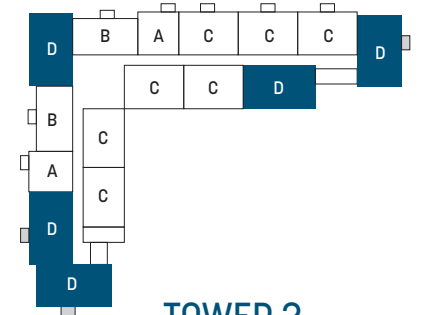


## UNIT D

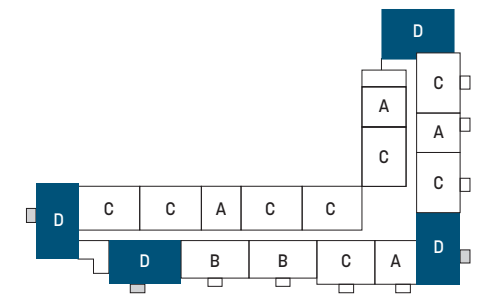
3 Bedrooms  
2 Bathrooms



**TOWER 1**  
TOTAL AREA 1,185 Sq. Ft.



**TOWER 2**  
TOTAL AREA 1,050 Sq. Ft.



**TOWER 3**  
TOTAL AREA 1,190 Sq. Ft.



The developer is WRDG T3A, T3B, T3C Developer, LLC, which has a license to use the name and trademarks of The Related Group by license. The renderings, including floor plans, are intended to illustrate unit options and layouts in general and are not a representations of unit sizes and dimensions specifically.

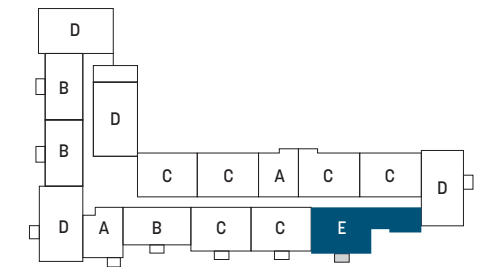
813.328.2026  
1345 W. Main Street, Tampa, FL 33607  
TPAtogether.com/Boulevard

# BOULEVARD



## UNIT E

3 Bedrooms  
2 Bathrooms



**TOWER 1**  
**TOTAL AREA 1,160 Sq. Ft.**



The developer is WRDG T3A, T3B, T3C Developer, LLC, which has a license to use the name and trademarks of The Related Group by license. The renderings, including floor plans, are intended to illustrate unit options and layouts in general and are not a representations of unit sizes and dimensions specifically.

813.328.2026  
1345 W. Main Street, Tampa, FL 33607  
TPAtogether.com/Boulevard